

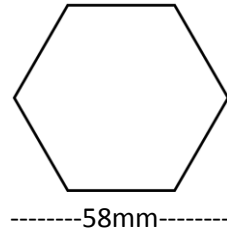
XTR7 Industrial Extreme:

Frame:

Material: 58mm Industrial aluminium

Frame style: Middle cross-bars with spring loaded roof mast(s) (1,2,3)

Framework design/shape: 58mm hexagonal section



NEW!!! Now with Internal Tube Ribs for extra strength!!!

Features:

- Cast alloy joints with quick pull-pin release system
- Rounded corner joints to protect canopy
- Galvanised steel feet
- Height adjustment – 5 different height positions, position 1 and 5 margin is 30 cm



Measurements:

- Edge of canopy (Valance) highest: 220 cm / lowest: 190 cm
- Top roof mast (Apex) highest: 357 cm / lowest: 327 cm

Top:

Material: 550g Polyester with PVC coating, PU (polyurethan) coating for full FLAME RETARDANCY

Features:

- Corner velcros
- Side velcros
- Taped seams
- Guyrope corner anchoring loops
- PVC Coating
- Screw down balls

Reinforcement: Double layer material reinforcement in corners and valences

Sides:

Material: 550g Polyester with PVC coating, PU (polyurethan) coating for full FLAME RETARDANCY

Printing:

Suitable for full flood digital printing on canopy and sidewalls

Included accessories:

- Tie down 7mm/220mm Pegs + guyropes
- Polyester (PVC coated) storage bag with solid base and wheels for frame+top
- Polyester (PVC coated) storage bag for sidewalls

Warranty:

- 12 months guarantee
- Spare parts full availability
- We DO NOT guarantee storm damage



1. 3m x 3m with sides



2. Internal Tube Ribs for extra strength!!!



3. Storage bag with solid base and wheels



4. Optional H/D cam lock straps, Stakes



5. Wheeled storage bag for frame + top



6. Storage bag for sidewalls



7. 3m x 3m with sides, roof structure



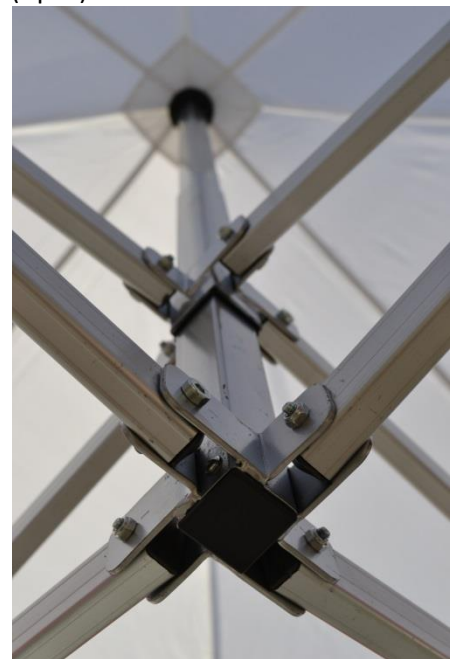
8. Roof structure – cross bars, roof mast (Apex)



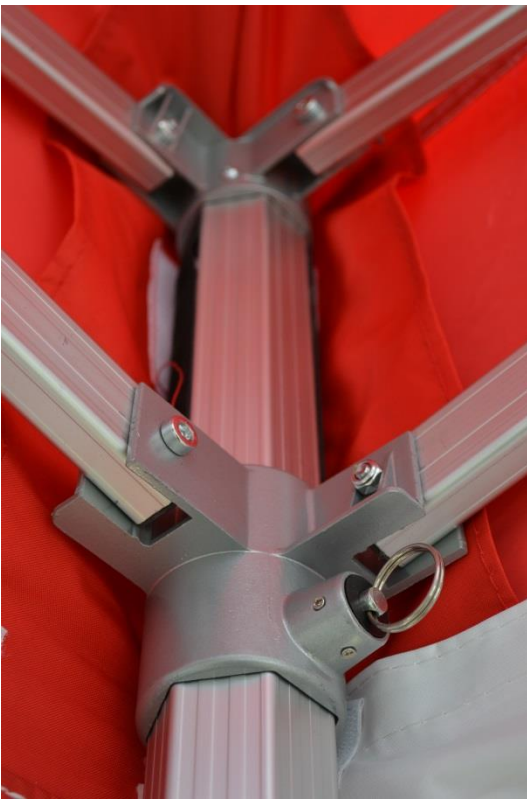
9. Canopy screw down ball/
Rounded corner joint to protect canopy



10. Height adjustment



11. Roof mast (Apex)



12. Double layer material corner reinforcement



13. Steel feet



14. 6m Hexagon with sides



15. 4.5m x 3m with sides



16. 6m x 3m with sides